

2011/12 PRODUCT REFERENCE



EUROPA

IN-STOCK TANDEM

'Over 30 finished frames in Europe stock

Nuovo Sport AL 27s.....	\$2.995	3390 €
Nuovo Sport LTD AL 30s.....	\$3.395	3860 €

Best Value CroMoly SE

Arriva SE 30s.....	\$3.495	4100 €
Cilantro SE 29s.....	\$3.295	3850 €

Premium CroMoly

Arriva 30s.....	\$4.595	5170 €
Fusion 30s.....	\$4.595	5170 €
Cilantro 29s.....	\$4.395	4930 €

Best Value Aluminium

Sovereign SE 30s.....	\$4.195	4880 €
-----------------------	---------	---------------

Premium Aluminium

Sovereign 30s.....	\$5.295	5960 €
Encore 30s.....	\$5.295	5960 €
Picante 29s.....	\$5.095	5710 €

Niobium, Scandium, Titan

Team Niobium 30s.....	\$6.295	7150 €
Team Scandium 30s.....	\$7.295	8340 €
Titan-700 30s.....	\$9.395	10720 €
Titan-26ATB 27s.....	\$8.395	9530 €

New Option

Exogrid® & Carbon Seatstays	\$2.000	2050 €
-----------------------------	---------	---------------

Beyond Carbon

Beyond w/Isogrid® tubing30	\$11.395	12900 €
Option P.H.D Isogrid® tubing30s...	\$1.000	1030 €

Competition All-Terrain

Extreme SR-Tandemfork....	\$6.395	7290 €
Titan Exogrid 29er Rohloff..	\$13.690	15460 €

Stowaway configuration

Couplers for CroMoly or Niobium.....	\$1.500	1580 €
Couplers for AL or Scandium.....	\$2.000	2100 €
Couplers for Ti or Carbon.....	\$2.800	2940 €

When 2 Seats aren't enough

<i>Family bikes (in-stock & custom)</i>	P	
Stretch Tandems with Premium Componentry		
CroMoly Triplet.....	\$6.195	7290 €
Aluminium Triplet.....	\$7.395	8800 €
Titanium Triplet.....	\$10.195	11800 €
CrMoly Quad.....	\$8.095	9930 €

Cabrio Travel Tandems with Premium Component

Add one section for a triplet; two for a quad		
CroMoly.....	\$8.995	9900 €
Aluminium.....	\$11.495	12600 €
Titanium.....	\$15.495	17200 €
Cabrio Quad CrMo.....	\$10.995	12200 €
Cabrio Quad Aluminium.....	\$13.995	15500 €
Cabrio Quad Titan.....	\$18.495	20400 €

akt.VK*

Optional Upgrades

Equip it your way ... without delay

akt.VK*

For Tandems with SE componentry

Hadley Racing wheelset.....	\$450	462 €
Santana Prem.AL-Carbon crankset.....		185 €
Rear Tamer/CC shockpost (stokers favo)	\$150	154 €
Handlebar front Prem Al-Carb.....	\$30	31 €
Ultegra 6703 3/10s controls.....	\$100	103 €
V-Max Carbon fork 26 / 700c.....	\$350	359 €

For Tandems with Premium componentry

Shimano Sweet-16 tandem wheelset....	\$850	921 €
Santana Carbon crankset.....	\$500	513 €
Front & Rear Tamer Carbon seatpost.....	\$250	257 €
Worlds finest sealed headset.....	\$125	128 €
31. 8 front stem & Carbon handlebar.....	\$300	308 €
V-Max Carbon fork included.....	incl.	0 €
Team Carbon V-fork.....	\$300	308 €
Reynolds carbon fork & Dura-Ace brake.....	\$550	565 €
Team frame w/ upgraded tubeset.....	\$600	616 €
Rohloff 14g Speedhub.....	ask	auf Anfrage
Custom fee for a built to measure frame....	\$400	411 €

For Team and Beyond Models

10inch rear disc.....	\$300	310 €
Reynolds fork DuraAce f&t brake.....	\$350	360 €
Reynolds fork w/ft. Dura-Ace & rear 10inch Disc.....	\$500	510 €
electric Shimano D12 shifting 20g 11-30.....	\$2.000	2050 €
Rear Der. Dura-Ace D12 for 11-36 cogs.....	\$600	620 €
Carbon timing belt drive *.....	\$200	205 €
Carbon belt drive inkl. Rohloff *.....	\$1.300	1330 €
Custom fee for a built to measure frame....	\$200	210 €

For all Modells

*Factory assembly required with asterisked options

Full factory assembly in USA.....	\$75	0 €
Wireless Flight Deck computer 30s 6603*.....	\$140	130 €
48-spoke wheels.....	\$50	51 €

standard on models with 3 or more seats

Bengal/Winzip Tandem non-hydr 10inch dis	\$300	308 €
powerful, reliable & troublefree		
Child stoker crankset *.....	\$275	282 €
Child stoker stem.....	\$75	77 €
Child crank shorteners.....	\$95	92 €
Pedals with clips & straps (each pair).....	\$20	19 €
Shimano SPD pedals (each pair).....	\$40	39 €
Rear rack Tubus-CARGO.....		79 €
Rear rack Tubus-COSMO Stainless.....		99 €
Rear rack Tubus-CARRY Titan.....		149 €
Front-Suspension for MTB-Modells	please ask	
All other components & accessoires	please ask	

Custom Frames / PAINTWORK

As soon as 3 weeks -- see page 25

akt.VK*

Custom BUILT-TO-MEASURE Frame

Extra fee varies w/ model -- see column to left

No additional fee for tandems w/ 3 and more seats

Custom braze-ons (each std bit).....	\$20	20 €
Custom finishes (unlimited selection, a few listed below)		
All other requests.....	ask	

Custom Paint or Finish

Best Value CroMoly

Choice of stock DuPont colors.....	std	std €
Choice of stock DuPont candy colors.....	\$100	100 €
Any in stock DuPont two color fade.....	\$200	210 €
Special to order DuPont color.....	\$200	210 €
Special to order DuPont fade color.....	\$300	310 €

Premium CroMoly

Any in stock DuPont colors& AlohaFade.....	std	std €
Any in stock DuPont two color fade.....	\$100	100 €
Special to order DuPont color.....	\$100	100 €
Special to order DuPont fade color.....	\$200	210 €
DuPont Santana ShadeShifter.....	\$400	410 €

Best Value Aluminium

Clear prizm finish.....	std	std €
Any in stock single Prizm finish.....	\$100	100 €
Any in stock multi-color Prizm finish.....	\$200	210 €
Special to order DuPont color.....	\$200	210 €
Special to order DuPont fade color.....	\$300	310 €

Premium Aluminium

Any in stock single Prizm finish.....	std	std €
Any in stock multi-color Prizm finish.....	\$100	100 €
Special to order DuPont color.....	\$100	100 €
Special to order DuPont fade color.....	\$200	210 €
DuPont Santana ShadeShifter.....	\$400	410 €
DuPont Cromalution.....	\$500	510 €

Exotic Alloys

Any in stock finish /fade / ShadesShifter.....	std	std €
Special to order DuPont color.....	\$100	100 €
DuPont Cromalution.....	\$300	310 €

All other Modells & Finishes

ase ask

Frame and fork in a standard size

Arriva, Fusion or Cilantro.....	\$2.795	2950 €
Sovereign, Encore or Picante.....	\$3.495	3750 €
Team Niobium with carbon fork.....	\$3.595	3990 €
Team Scandium w/carbon fork.....	\$4.295	5180 €
Ti-700 or 26" w/carbon fork.....	\$6.395	7560 €
Beyond with carbon fork.....	\$8.395	9700 €
Frame / Rahmen für Rohloff spec.....	\$500	500 €

Extratour Touring single w/carbon fork.... **1290 €**



The prices include 19% Tax & assembly, freight, duty!
Specifications an prices are subject to change
without notice based on supply, exchange rates
and new product development.

Costs for self import from USA:

Example Arriva USA:	\$4.595
assembling&US freight	\$125
VAT in USA (-8%)	\$378
Total USA Retail:	\$5.098
Rate € 0,72 / 1 US\$	3670 €
Freight US > D approx.	250 €
Duty approx. 15%	551 €
19% Tax	802 €
Total Euro	5273 €

Effective 01/09/2011

>>> aktuelle Infos unter: www.SANTANA-TANDEM.com /Aktuelles

ca. * € 0,72 / 1 US\$

* The prices may vary depend on the US\$ rate.

Pricelist valid from 01 Sep 11

Standard colors :



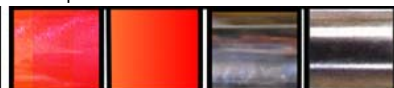
candy/baha-blue DuPont Chroma Premier paint
candy/regal-red DuPont Chroma Premier paint
aloha-fade DuPont Chroma Premier paint
bahama-orange /black DuPont Chroma Premier paint

PRIZM finishes on aluminium models:



prizm blue Hand Engraved Aluminium finish
prizm red Hand Engraved Aluminium finish
prizm aloha Hand Engraved Aluminium finish
prizm clear Hand Engraved Aluminium finish

Special finishes:



prizm sunset fade Hand Engraved Aluminium finish
sunset fade Hand Engraved Aluminium finish
bright DuPont Chroma Premier paint
polished Titan finish

And lots more colors optionally available...